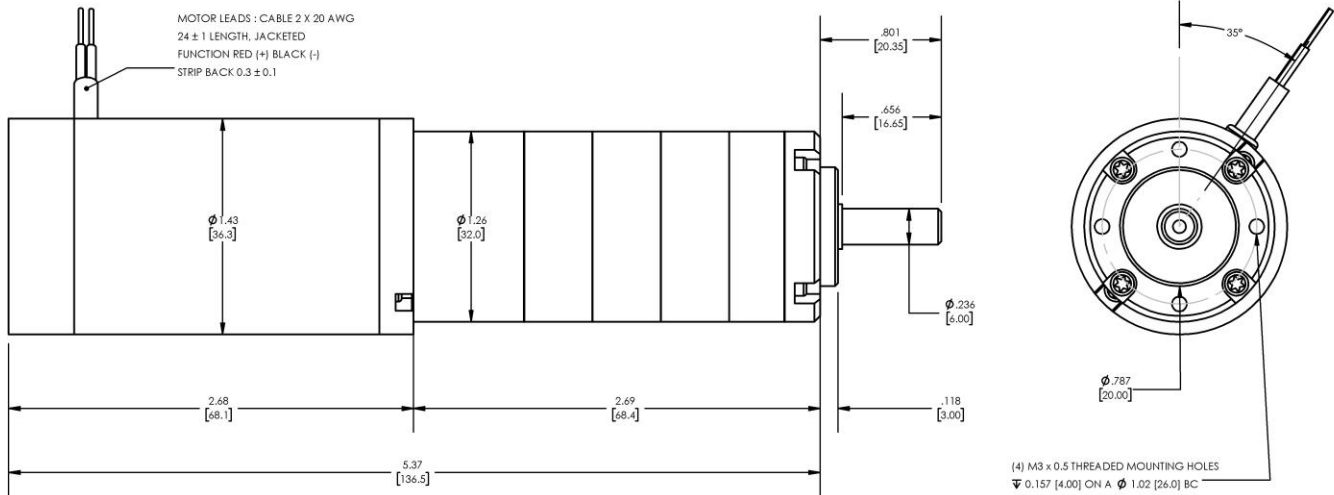


Model Number:
MMP TM36-268H-48V GP32-1140


DIMENSIONS ARE INCHES [MM] UNLESS OTHERWISE STATED

PLANETARY GEARMOTOR OUTPUT PARAMETERS:	VALUE	UNITS	TOLERANCE
Gearhead Ratio (exact)	1139.73 : 1		
Gearhead Shaft Output Speed (at full-load)	3.6	RPM	MAX
Gearmotor Rated Continuous Torque	79	In-Lbs	MAX
Gearmotor Rated Peak Torque	80++	In-Lbs	----
Gearhead Standard Backlash	99	Arc Minutes	MAX
Gearhead Efficiency	65%	----	----
Output Shaft Radial Load Capacity	30	Lbs	MAX
Output Shaft Axial Load Capacity	9	Lbs	MAX
Gearmotor Total Weight	1.3	Lbs	MAX

++ All Peak Torque values are dependent upon duty. Contact our sales office for details.

DC MOTOR PERFORMANCE PARAMETERS:	VALUE	UNITS	TOLERANCE
Rated DC Voltage	48	DC VOLTS	----
Rated Continuous Current	0.21	AMPERES	----
No-Load Speed	5053	RPM	MAX
Rated Speed	4140	RPM	+/- 15%
Rated Continuous Power Out	5	WATTS	+/- 15%
Rated Continuous Torque	1.7	OZ-IN	----
Peak Torque (motor only)	10	OZ-IN	----
No-Load Current	0.08	AMPERES	MAX
Back EMF Constant (Ke)	9.5	V/KRPM	+/- 10%
Torque Constant (Kt)	12.8	OZ-IN/AMP	+/- 10%
DC Armature Resistance	40.74	OHMS	+/- 15%
Armature Inductance	16.25	mH	+/- 15%
Armature temperature	155	DEG. C	MAX

NOTES:

- ENCODER & BRAKE OPTIONS AVAILABLE – [FOLLOW THIS LINK FOR DETAILS](#)
- NEMA MOUNTING FLANGE OPTION AVAILABLE – [FOLLOW THIS LINK FOR DETAILS](#)

MIDWEST MOTION PRODUCTS, INC

DESIGN, MANUFACTURING & DISTRIBUTION - MOTION CONTROL EQUIPMENT

www.midwestmotion.com

email: sales@midwestmotion.com